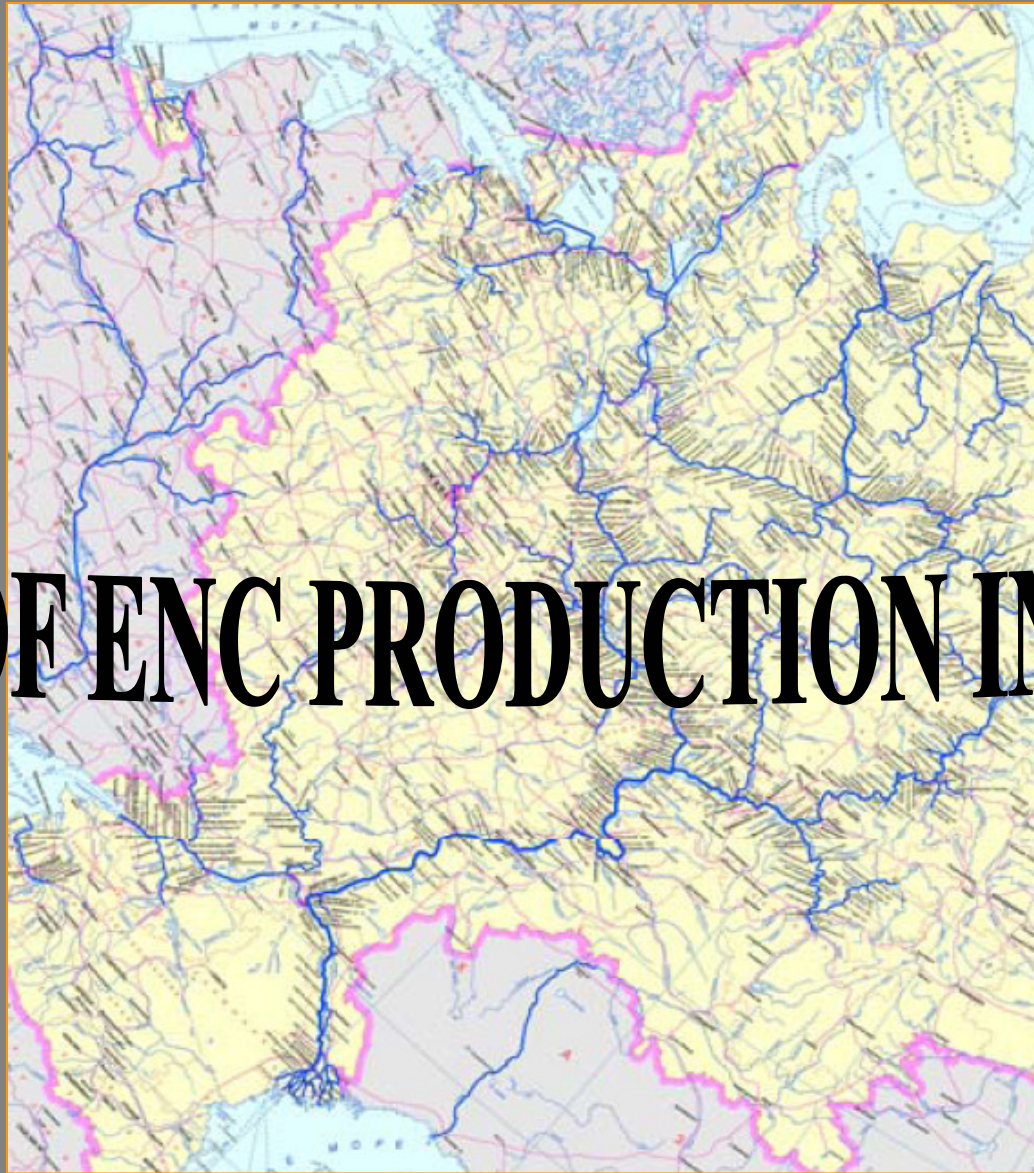
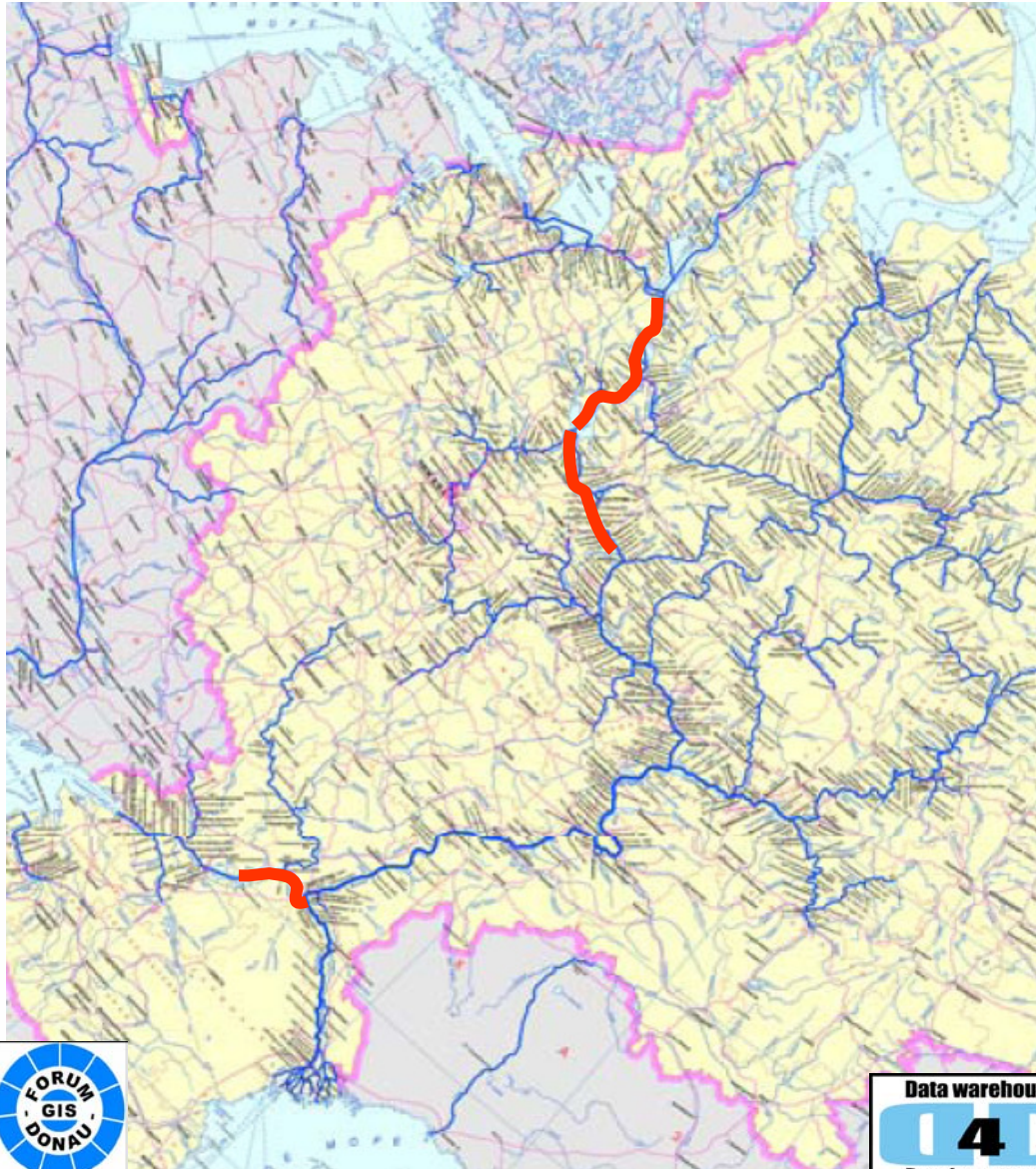


STATUS OF ENC PRODUCTION IN RUSSIA



Presented by Vladimir Sekachev

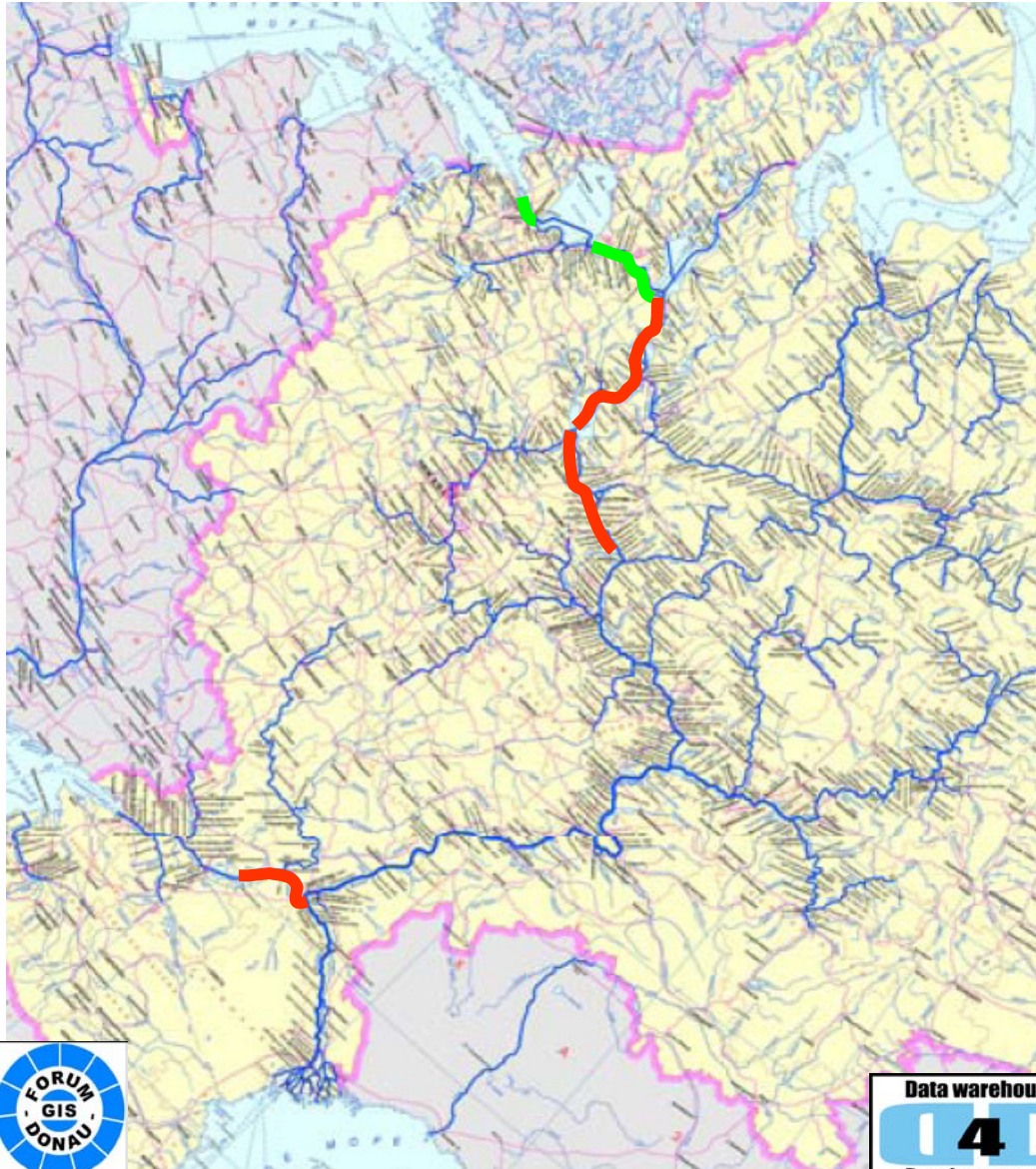
February 2007



In the inter-navigation period of 2006-2007 new Inland ENC's have been created for the following waterways:

- River Volga (Rybinsk to Novocheboksarsk)**
- Volga Baltic Canal**
- Volga-Don Waterway (Volgograd to Azov)**

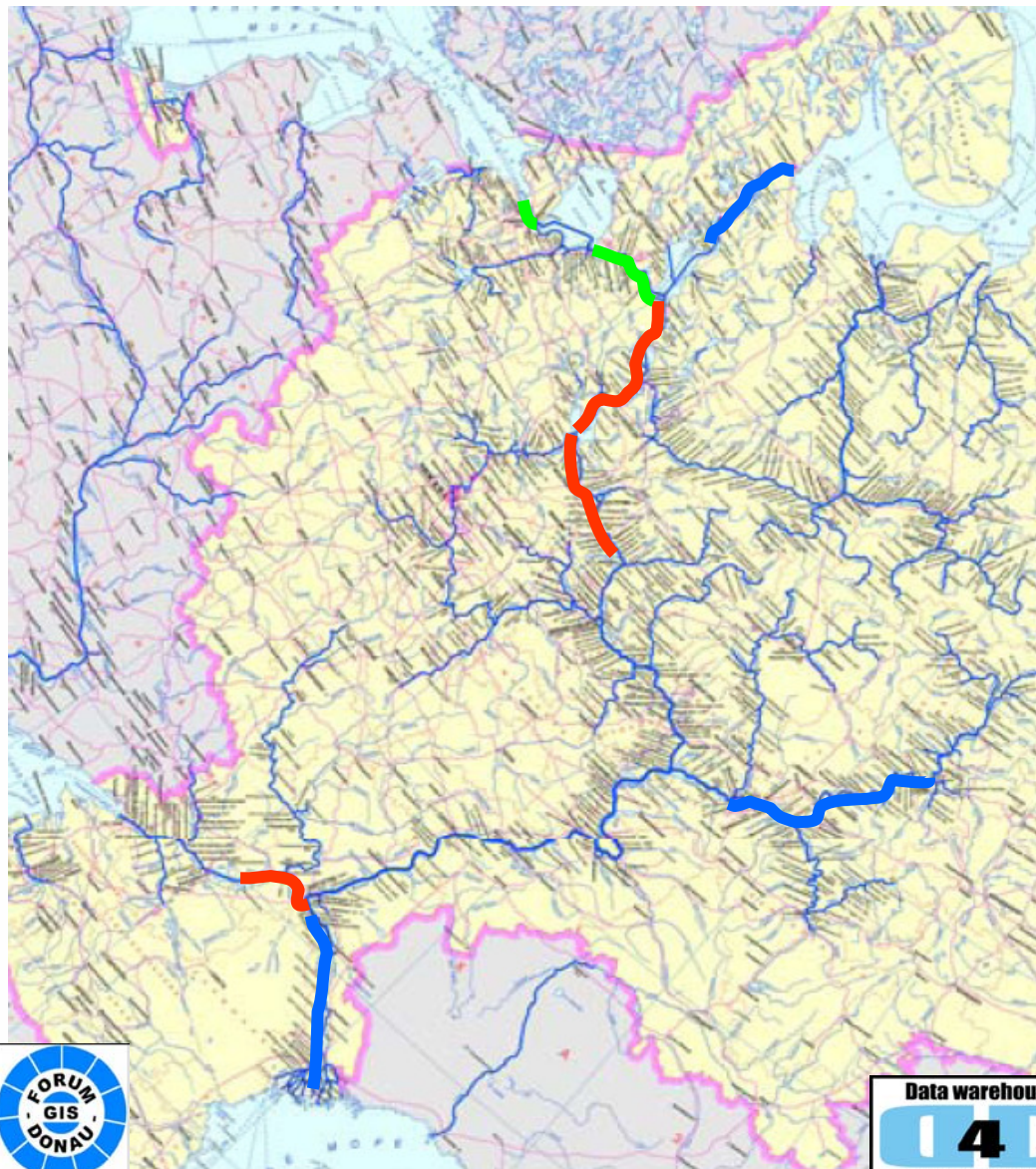




Complying with the new 2006 survey data the ENC's for Neva and Svir' Rivers are re-compiling.

In the result total extension of Russian inland waterways covered with electronic charts will make up 4200 km.





For the moment only lower Volga (Volgograd to Astrakhan’), Belomorsko-Baltic Canal and Kama River (mouth of Vyatka River to Perm’) are still uncovered with Inland ENC’s.

The latter waterway with extension of 685 km will be provided with so called “approximate” Inland ENC’s designed only for the river ships of Kama’s State Basin Department. The compilation of these charts has been started. The charts will be available for sale by the navigation of 2008.



Thank you for your attention!

